



Published on *CD-adapco* (<http://www.cd-adapco.com>)

[Home](#) > Infinite Possibilities

---

## STAR-CCM+ v8: Infinite Possibilities



STAR-CCM+ v8 release specifically aimed at increasing engineering productivity, making the software even easier to use and interact with, and significantly reducing the time required to get a high-quality solution

**New York and London. February 27, 2013**

"The STAR-CCM+ v8 <sup>[1]</sup> releases are specifically aimed at increasing engineering productivity, making the software even easier to use and interact with, and significantly reducing the time required to get a high-quality solution," said Senior VP Product Management Jean-Claude Ercolanelli. "STAR-CCM+ v8.02 <sup>[1]</sup> is the first of our v8 releases to benefit from our investment in a dedicated User Experience Team, whose task is to dissect and improve every aspect of the software, resulting in more effective and more productive simulation engineers."

"New multi-disciplinary enhancements allow users to tackle a wider range of industrially relevant challenges," continued Ercolanelli. "Among these new features and enhancements is a new STAR-Cast add-on, developed in collaboration with our partner, ACCESS, recognized experts in casting and metallurgy, which provides a comprehensive and intuitive process for performing multiphase casting simulation and brings automation and ease-of-use to casting and foundry processes."

**Usability** related enhancements include:

- Parts Based Meshing allows users to associate mesh definitions with geometric entities, resulting in greater control, better automation and reduced turnaround time.
- New Surface Preparation greatly reduces the amount of time required to clean-up imported CAD geometries, particularly those that include large assemblies of components.
- JTOpen integration has the potential to cut import times from hours to minutes for large complex CAD assemblies.
- There are also a number of Graphic User Interface (GUI) enhancements.

**Performance** related enhancements include:

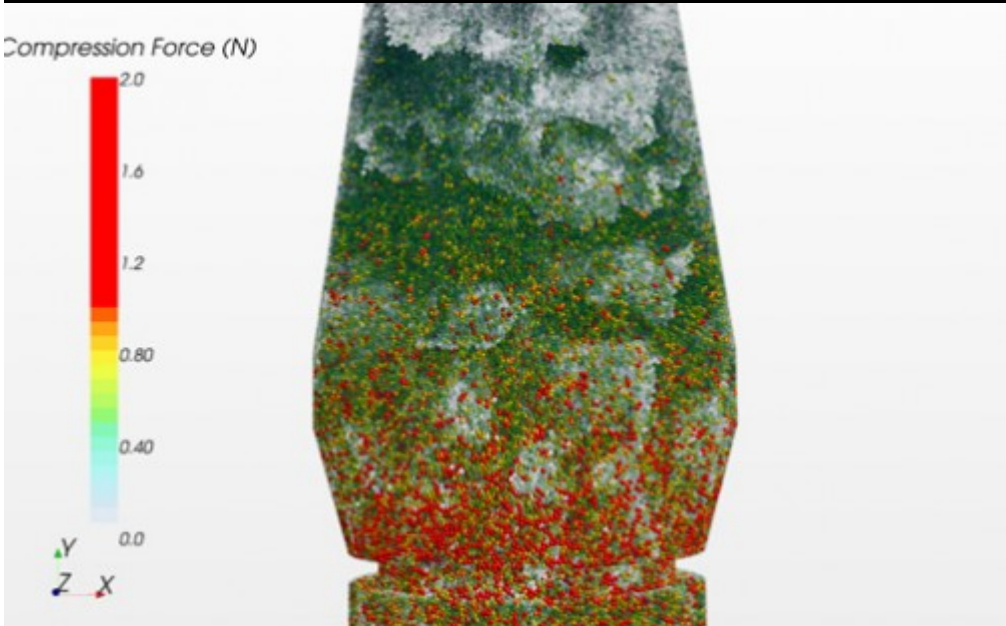
- Lagrangian and DEM dynamic load balancing improves runtimes for applications such as SCR devices, IC engines and chemical sprays by at least a factor of 2.5.
- Improvements to the AMG algorithm dramatically decreases simulation time on high processor count clusters for large scale unsteady simulations such as underhood, aerodynamic, and aeroacoustic analyses

**Expanded coverage** includes:

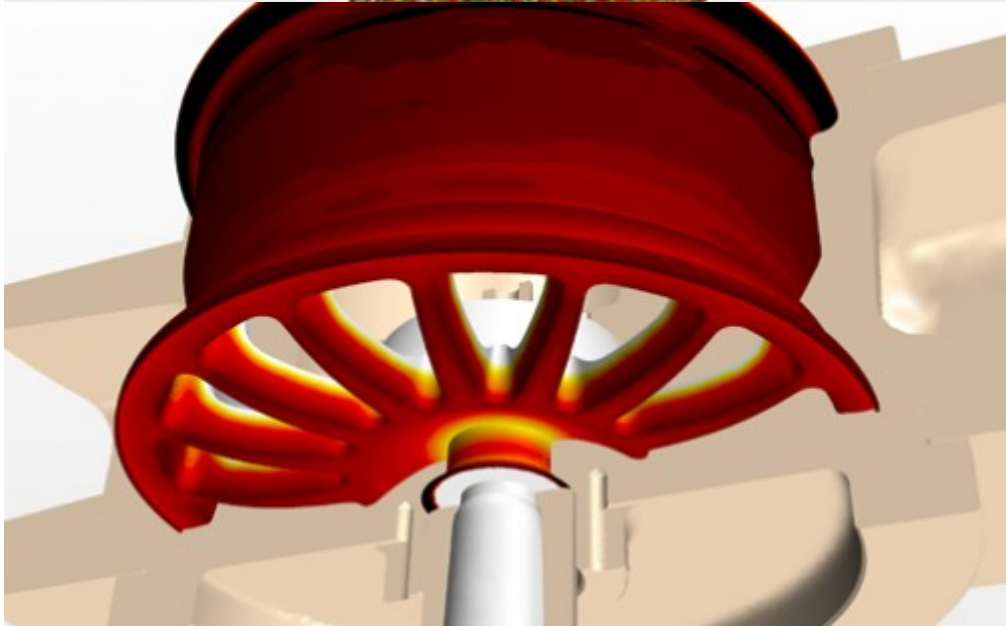
- The STAR-Cast add-on is a new streamlined casting simulation process that places industrial strength simulation technology in the hands of foundrymen, casting designers and tool makers.
- The Fluid Film Model can now be used with the Moving Reference Frame (MRF) model to simulate films on objects that move such as pumps and break-disks; and with the coupled solver, which is a key requirement for the aerospace industry. The model can also now be used to simulate icing and de-icing effects using a multi-component melting and solidification model.
- The Eulerian multiphase capability is improved through the addition of interphase and intraphase reactions models, used for tackling problems in the chemical and process industries.
- A new co-simulation capability through coupling with AMESIM, a 1D multi-domain simulation tool, enabling simulation possibilities for hydraulics, IC engines, electro-magnetic and fuel injection systems.



[2]



[3]



[4]

CD-adapco????

CD-adapco ([www.cd-adapco.com](http://www.cd-adapco.com) [5])  
?????????CFD?CAE??  
CCM+?STAR-CD?????????CFD??CAE  
??  
?????????CD-  
adapco????????????5????????????17????????????30????????700????????????????????

????????????

????CD-adapco

?????????? ??

TEL:045-475-3285 FAX:045-475-3295

E-mail: [marketing-jp@cd-adapco.com](mailto:marketing-jp@cd-adapco.com) [6]

Web: <http://www.cd-adapco.co.jp> [7]

**Products:**

[STAR-CCM+®](#) [8]

[Technologies](#) [9]

[3D-CAD](#) [10]

[CAD & PLM Integration](#) [11]

[Overset](#) [12]

[Client-server architecture](#) [13]

[Solvers](#) [14]

[Multi-disciplinary](#) [15]

[Motion](#) [16]

[Advanced Meshing](#) [17]

CD-adapco is the world's largest independent CFD focused provider of engineering simulation software, support and services. We have over 30 years of experience in delivering industrial strength engineering simulation.

**Source URL:** <http://www.cd-adapco.com/node/1912?page=12%2C1>

**Links:**

[1] <http://www.cd-adapco.com/products/star-ccm>

[2] [http://www.cd-adapco.com/sites/default/files/styles/thumbnail/public/pr/gallery/v8\\_650\\_b.jpg?itok=FFSrVz4J](http://www.cd-adapco.com/sites/default/files/styles/thumbnail/public/pr/gallery/v8_650_b.jpg?itok=FFSrVz4J)

[3] [http://www.cd-adapco.com/sites/default/files/styles/thumbnail/public/pr/gallery/v8\\_2\\_557.jpg?itok=EyB8u81E](http://www.cd-adapco.com/sites/default/files/styles/thumbnail/public/pr/gallery/v8_2_557.jpg?itok=EyB8u81E)

[4] [http://www.cd-adapco.com/sites/default/files/styles/thumbnail/public/pr/gallery/v8\\_1\\_557.jpg?itok=WHIC4gFt](http://www.cd-adapco.com/sites/default/files/styles/thumbnail/public/pr/gallery/v8_1_557.jpg?itok=WHIC4gFt)

[5] <http://www.cd-adapco.com>

[6] <mailto:marketing-jp@cd-adapco.com>

[7] <http://www.cd-adapco.co.jp>

[8] <http://www.cd-adapco.com/products/star-ccm%C2%AE>

[9] <http://www.cd-adapco.com/products/technologies>

[10] <http://www.cd-adapco.com/products/star-ccm%C2%AE/3d-cad>

- [11] <http://www.cd-adapco.com/products/star-ccm%C2%AE/cad-plm-integration>
- [12] <http://www.cd-adapco.com/products/star-ccm%C2%AE/overset>
- [13] <http://www.cd-adapco.com/products/star-ccm%C2%AE/client-server-architecture>
- [14] <http://www.cd-adapco.com/products/star-ccm%C2%AE/solvers>
- [15] <http://www.cd-adapco.com/products/star-ccm%C2%AE/multi-disciplinary>
- [16] <http://www.cd-adapco.com/products/star-ccm%C2%AE/motion>
- [17] <http://www.cd-adapco.com/products/star-ccm%C2%AE/advanced-meshing>