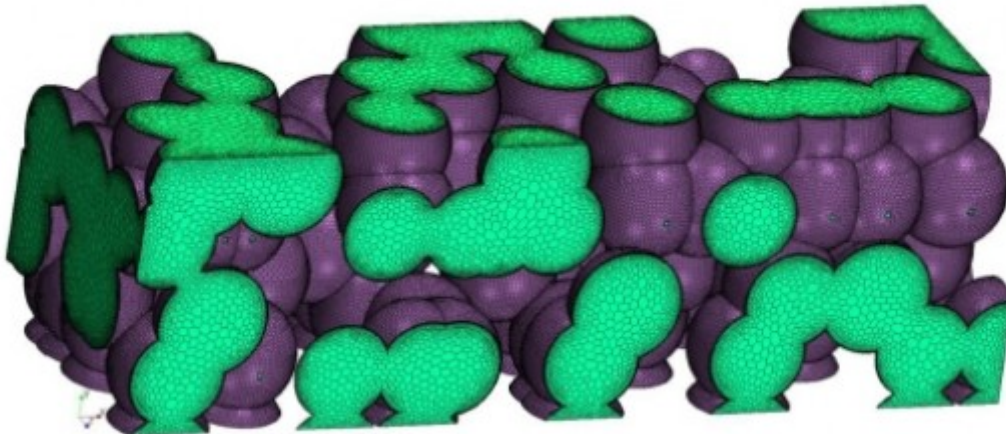




Published on *CD-adapco* (<http://www.cd-adapco.com>)

[Home](#) > Geometry-Resolved Electro-Chemistry Model of Li-Ion Batteries

Geometry-Resolved Electro-Chemistry Model of Li-Ion Batteries



Publisher:

SAE International

Date:

Monday, January 2, 2012

[Order on SAE Website: Geometry-Resolved Electro-Chemistry Model of Li-Ion Batteries](#) [1]

Abstract:

The paper presents a simulation approach to Li-Ion batteries based on geometrically resolved electrodes. This means that solid particles and the space occupied by electrolyte are not overlapping but are represented by contiguous, arbitrarily shaped volumes. The solid-electrolyte interface is explicitly resolved and thus allows detailed modeling of electrochemical processes that are essential for studying performance of the battery cell. Finite volume method is used to solve the equations governing the mass and thermal energy conservation in solid and electrolyte, as well as the distribution of electric potential. The solution domain is discretized in contiguous control volumes of arbitrary polyhedral shape, with conformal interface between solid and fluid regions. Butler-Volmer equation is used to describe the kinetics of solidelectrolyte interface. For the time being, representative geometries of electrodes are manufactured using CAD-tools, but real geometries obtained using scanning methods will be used in future. One example application is presented and the results are compared to those obtained using a widely accepted one-dimensional method.

Author Name:

Robert Spotnitz
Boris Kaludercic
Samir Muzaferija
Milovan Peric
Gaetan Damblanc
Steve Hartridge

Author Company:

Battery Design LLC, 2277 Delucchi Drive, Pleasanton, CA 94588
CD-adapco, 60 Broadhollow Road, Melville, NY 11747

Products:

[STAR-CCM+®](#) [2] ? [Physics](#) ? [Electrochemistry](#) [3]

Industries:

[Batteries](#) [4]

CD-adapco is the world's largest independent CFD focused provider of engineering simulation software, support and services. We have over 30 years of experience in delivering industrial strength engineering simulation.

Source URL: http://www.cd-adapco.com/technical_document/geometry-resolved-electro-chemistry-model-li-ion-batteries?language=en

Links:

- [1] <http://papers.sae.org/2012-01-0663>
- [2] <http://www.cd-adapco.com/products/star-ccm%C2%AE>
- [3] <http://www.cd-adapco.com/products/star-ccm%C2%AE/electrochemistry>
- [4] <http://www.cd-adapco.com/industries/batteries>